

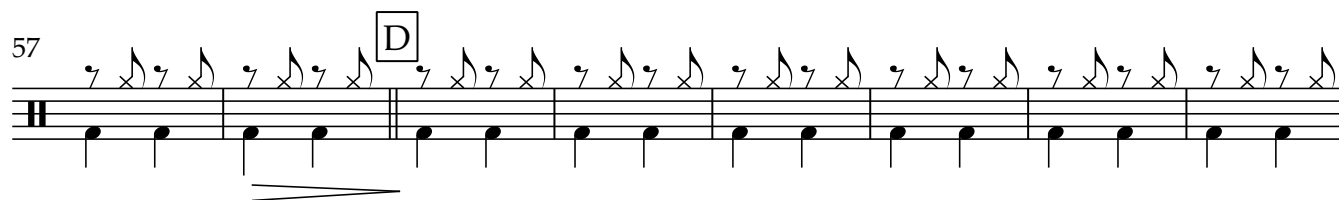
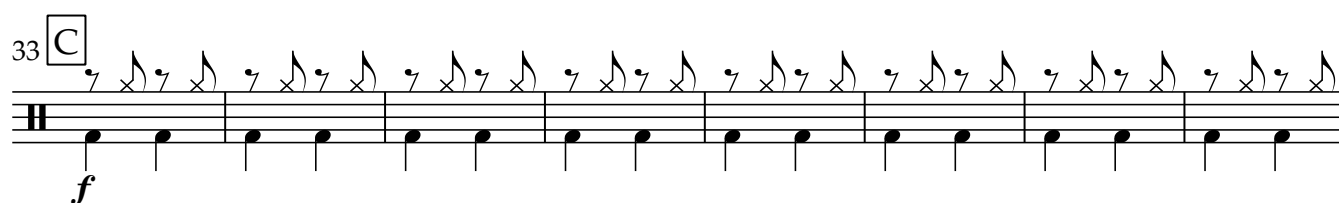
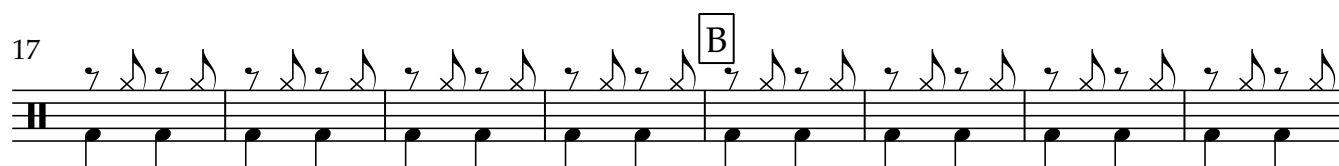
# Drum Set

## Måne i det blå

Inger Lise Stulien  
arr : Stig Nordhagen

ad lib. Country style

♩=96



-Måne i det blå-

2

Drum Set

81 fill **E**

90 *f*

98

106

114 **F**

122

129

135 **G**

143

151 fill 3 *p*

162

170 *p*

A drum set score for the piece 'Måne i det blå'. The score is written on ten staves, each representing a 4-measure phrase. The notation uses standard drum set symbols: a vertical line for the snare drum, an 'x' for the hi-hat, and a circle for the bass drum. The score includes various musical notations such as rests, beams, and dynamic markings. Key features include: a 'fill' instruction at measure 81; a boxed letter 'E' above measure 81; a forte 'f' dynamic marking at measure 90; a boxed letter 'F' above measure 114; a boxed letter 'G' above measure 135; a triplet of eighth notes marked with a '3' and a piano 'p' dynamic at measure 151; and a piano 'p' dynamic marking at the end of measure 170. The staves are numbered 81, 90, 98, 106, 114, 122, 129, 135, 143, 151, 162, and 170.