

CARMEN

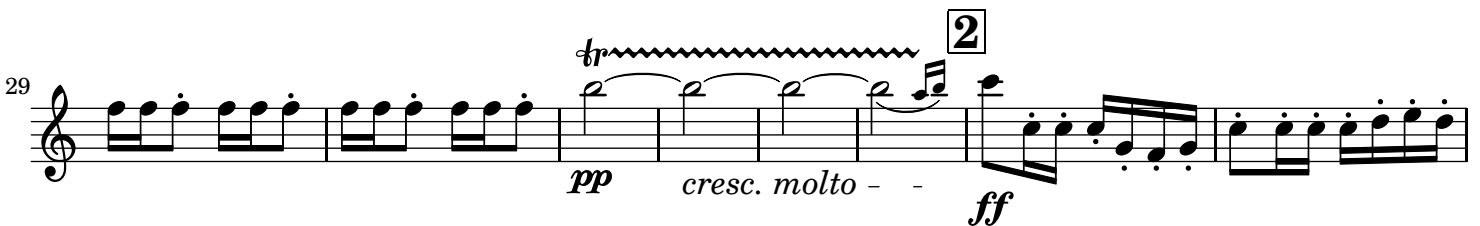
N°1. Prélude

Clarinete 1 en La

Georges BIZET

(1838-1875)

Allegro giocoso (♩ = 116)



48 3 23 1

p 3

Detailed description: Musical staff 48-57. Starts with a treble clef and a key signature of two flats. The music consists of eighth and sixteenth notes. A box containing the number '3' is placed above the staff at measure 49. A '23' is written above the staff at measure 52. A first ending bracket spans measures 53-54, ending with a first ending '1' above the staff. A piano dynamic marking '*p*' is placed below the staff at measure 53, with a '3' below it.

77 4

ff

Detailed description: Musical staff 77-81. Starts with a treble clef and a key signature of two flats. The music features a melodic line with eighth and sixteenth notes. A box containing the number '4' is placed above the staff at measure 78. A fortissimo dynamic marking '*ff*' is placed below the staff at measure 77.

82 *espress.*

p

Detailed description: Musical staff 82-88. Starts with a treble clef and a key signature of two flats. The music consists of eighth and sixteenth notes. An 'espress.' marking is placed above the staff at measure 82. A piano dynamic marking '*p*' is placed below the staff at measure 85.

89 *cresc.* *f*

Detailed description: Musical staff 89-95. Starts with a treble clef and a key signature of two flats. The music features a melodic line with eighth and sixteenth notes. A 'cresc.' marking is placed below the staff at measure 90. A fortissimo dynamic marking '*f*' is placed below the staff at measure 94. Trills are marked with 'tr' above notes in measures 91 and 92.

96 5 *ff* *ff*

cresc. 3 3

Detailed description: Musical staff 96-101. Starts with a treble clef and a key signature of two flats. The music consists of eighth and sixteenth notes. A box containing the number '5' is placed above the staff at measure 97. A 'cresc.' marking is placed below the staff at measure 96. Fortissimo dynamic markings '*ff*' are placed below the staff at measures 99 and 101. Triplet markings '3' are placed below the staff at measures 98 and 100.

102 *tr*

Detailed description: Musical staff 102-107. Starts with a treble clef and a key signature of two flats. The music consists of eighth and sixteenth notes. A trill marking 'tr' is placed above a note in measure 102.

108 *tr*

Detailed description: Musical staff 108-113. Starts with a treble clef and a key signature of two flats. The music consists of eighth and sixteenth notes. Trill markings 'tr' are placed above notes in measures 108 and 111.

114 *più ff*

b *tr*

Detailed description: Musical staff 114-119. Starts with a treble clef and a key signature of two flats. The music consists of eighth and sixteenth notes. A 'più ff' marking is placed below the staff at measure 114. A trill marking 'tr' is placed above a note in measure 115, with a flat 'b' above it.

CARMEN

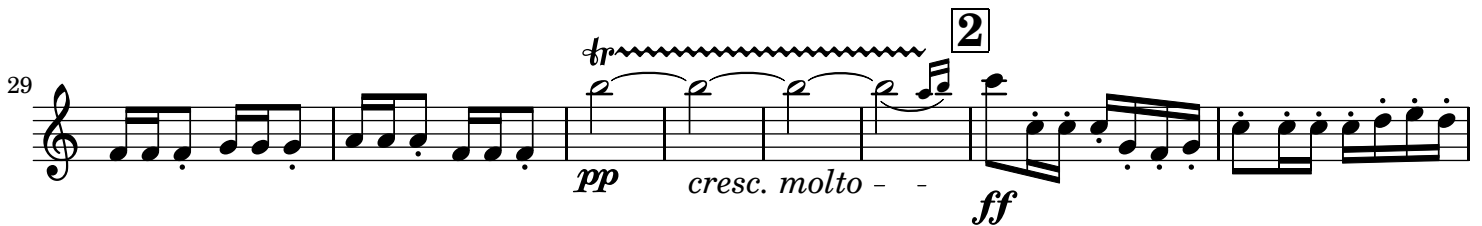
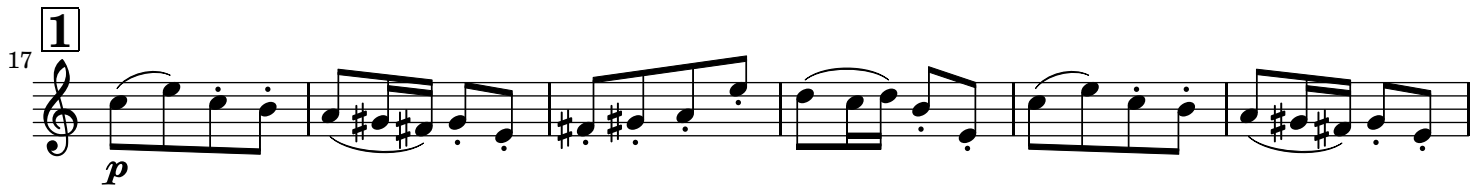
N°1. Prélude

Clarinete 2 en La

Georges BIZET

(1838-1875)

Allegro giocoso (♩ = 116)



48 3 23 3 1

77 4

82 espress.

89 tr

96 5

102 tr

108 tr

114 tr