

CARMEN

N°1. Prélude

Basson 1

Georges BIZET

(1838-1875)

Allegro giocoso (♩ = 116)

ff

9

17 **1**

p

24 *tr*

f

31 **2**

pp *cresc. molto* - - - *ff*

40

48

3

23

1

p

ff

78

4

p

85

espress.

p

cresc. -

94

tr

f

cresc. - - - -

3

ff

5

102

111

più ff

CARMEN

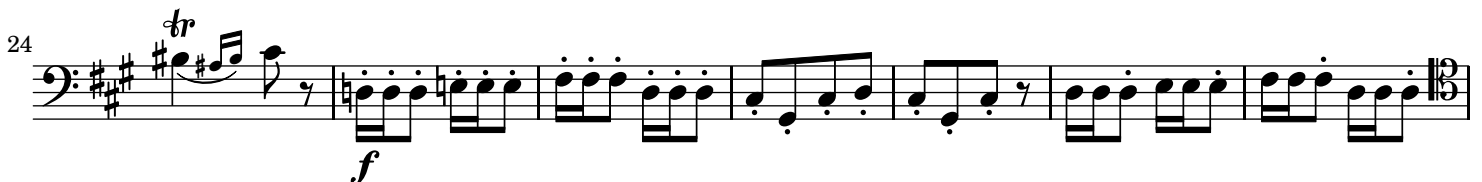
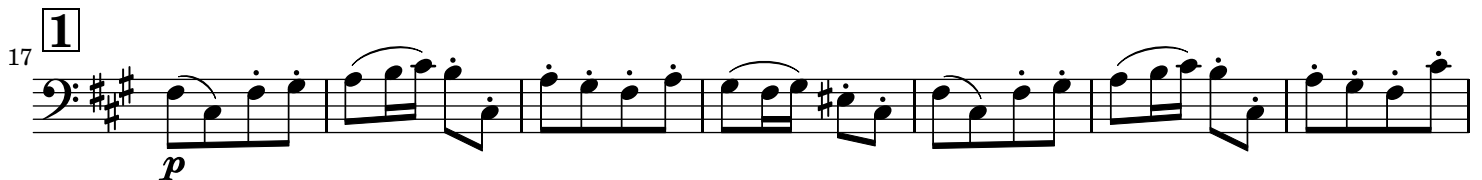
N°1. Prélude

Basson 2

Georges BIZET

(1838-1875)

Allegro giocoso (♩ = 116)



48

3 23 1

*p*³ *ff*

Musical staff 48-57 in bass clef, key of D major. It features a triplet of eighth notes (marked '3'), a dynamic marking of *p* with a '3' below it, and a first ending bracket (marked '1') leading to a *ff* dynamic.

78

4

Musical staff 78-84 in bass clef, key of D major. It features a fourth ending bracket (marked '4') over a series of eighth notes.

85

espress.

p *cresc.* -

Musical staff 85-93 in bass clef, key of D major. It features a dynamic marking of *p*, the instruction *espress.*, and a crescendo marking *cresc.* with a dash.

94

*f*³ *cresc.* - - - - - *ff*³ *ff*

5

Musical staff 94-101 in bass clef, key of D major. It features a triplet of eighth notes (marked '3'), a dynamic marking of *f* with a '3' below it, a crescendo marking *cresc.* with a dash, a triplet of eighth notes (marked '3'), a dynamic marking of *ff* with a '3' below it, and a fifth ending bracket (marked '5').

102

Musical staff 102-110 in bass clef, key of D major. It consists of a continuous eighth-note pattern.

111

più ff

Musical staff 111-118 in bass clef, key of D major. It features a dynamic marking of *più ff*.