

Violino I, Violino Solo

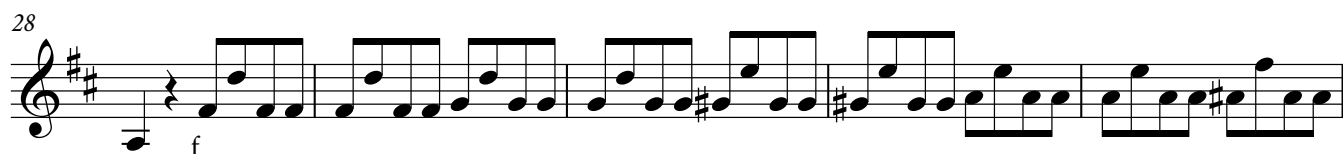
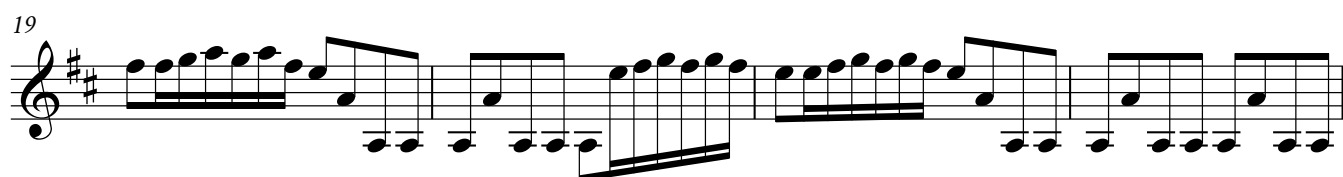
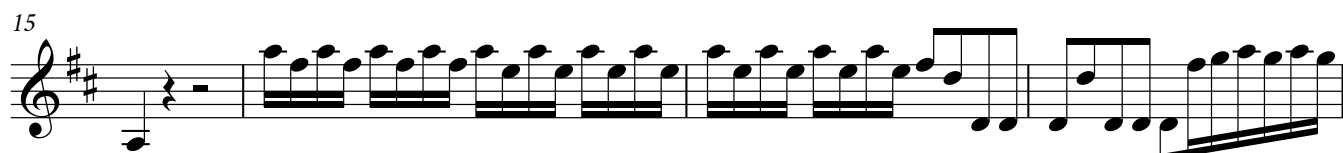
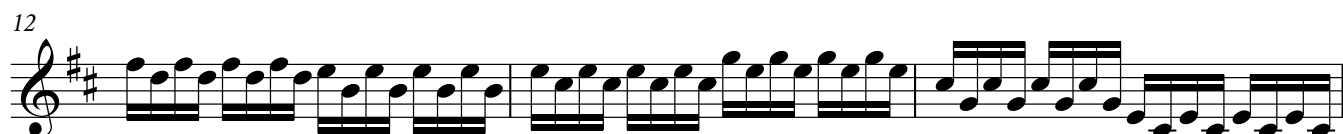
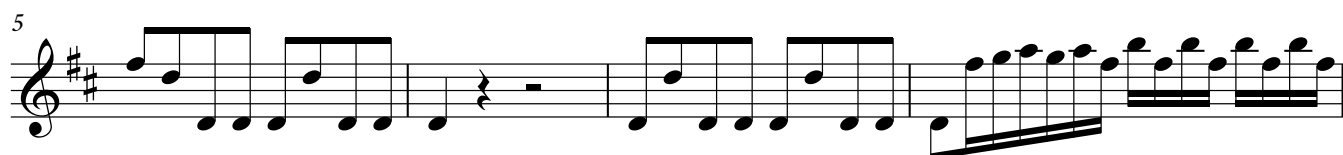
Gloria

RV 589

Antonio Vivaldi

1. Gloria

Allegro



37

41

46

50

55

60

63

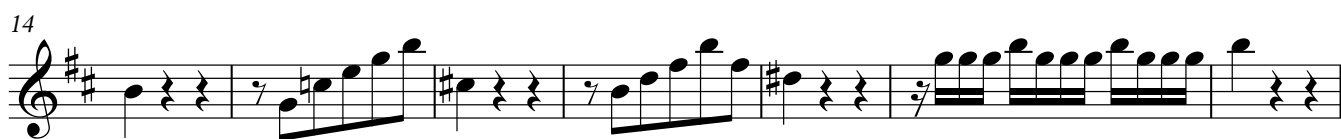
65

68

70

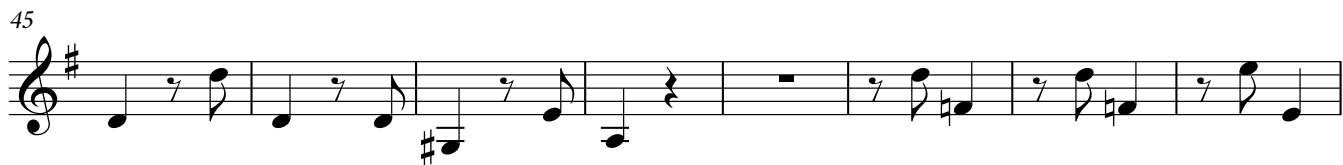
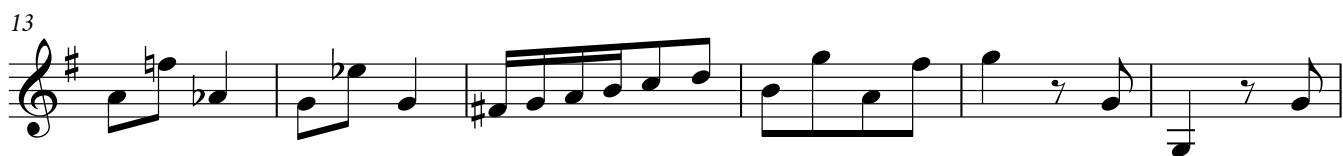
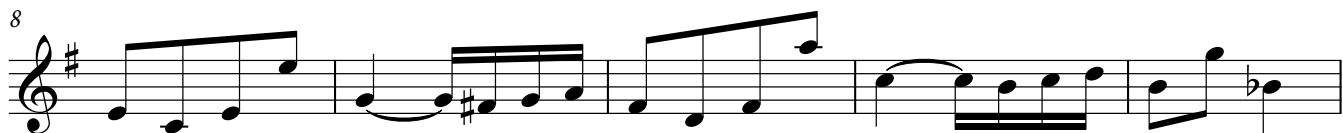
2. Et in terra pax hominibus

Andante



3. Laudamus te

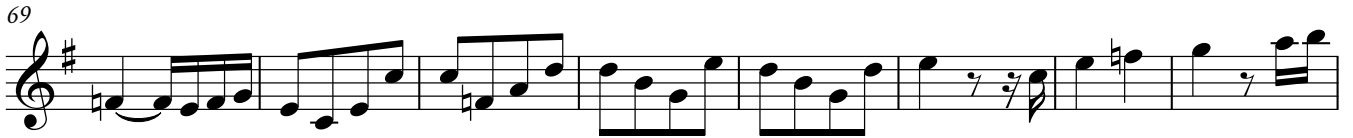
Allegro



61



69



77



85



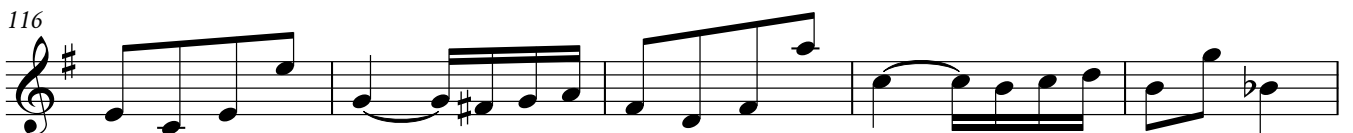
93



108



116

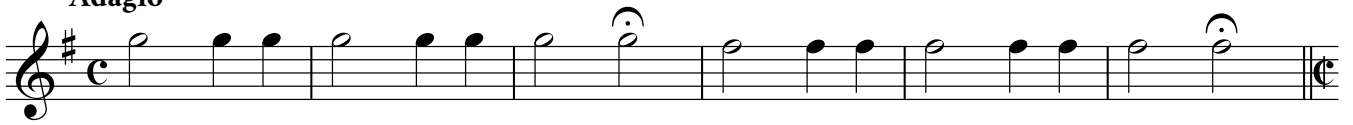


121



4. Gratias agimus tibi

Adagio



5. Domine Deus, Rex coelestis

Largo

4

7

10 **5** *tr* *tr*

17

20 **2**

26 *tr* *tr*

29 *tr*

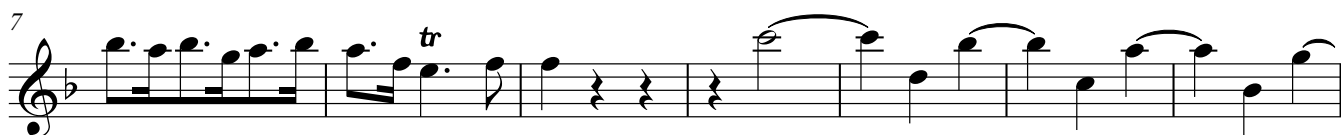
32 **4**

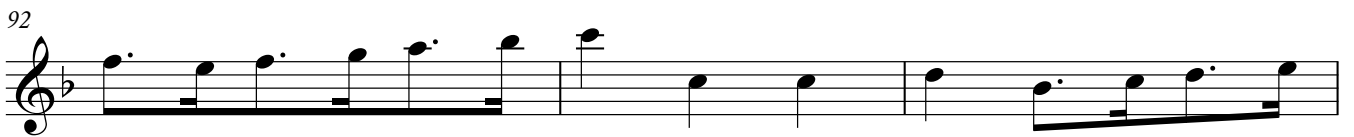
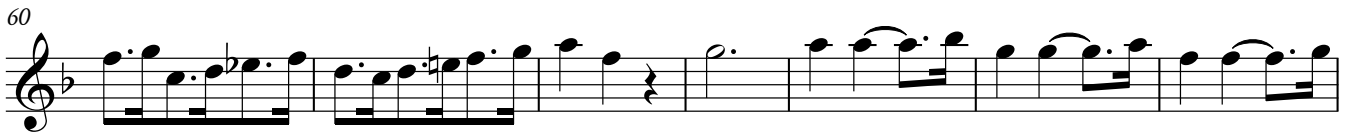
39

41

6. Domine Fili unigenite

Allegro





7. Domine Deus, Agnus Dei

Adagio

Musical score for 'Domine Deus, Agnus Dei' in G major, 4/4 time, Adagio. The score consists of four staves of music. The first staff begins with a 12-measure rest. The second staff has a 3-measure triplet. The third staff has a 2-measure rest. The fourth staff has a 2-measure rest and a 4-measure rest.

8. Qui tollis peccata mundi

Adagio

Musical score for 'Qui tollis peccata mundi' in G major, 3/4 time, Adagio. The score consists of four staves of music. The first staff is in common time (C) and ends with a double bar line. The second staff starts at measure 8 with a tempo marking of (♩ = ♩). The third staff begins at measure 13 with a slur over two notes. The fourth staff begins at measure 17 with a slur over two notes.

9. Qui sedes a dexteram Patris

Allegro

11

22

32

44

55

69

85

100

112

122



Musical staff starting at measure 122. It features a treble clef, a key signature of two sharps (F# and C#), and a common time signature. The music consists of eighth and sixteenth notes, with a fermata over a measure at the end of the line. A fingering '2' is indicated above a note.

134



Musical staff starting at measure 134. It continues the melodic line with eighth and sixteenth notes.

142



Musical staff starting at measure 142. It includes a trill marked 'tr' and ends with a fermata over a whole note.

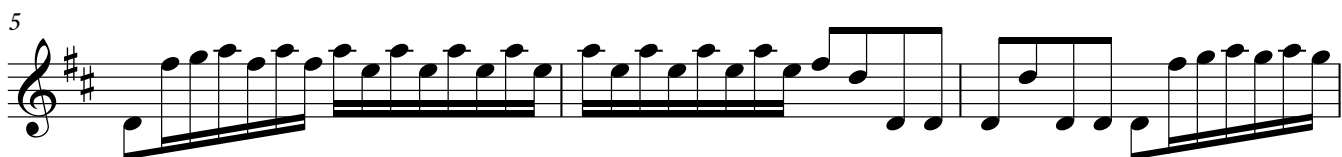
10. Quoniam tu solus sanctus

Allegro



Musical staff starting at measure 1. It begins with a treble clef, a key signature of two sharps, and a common time signature. The music features a rhythmic pattern of eighth notes.

5



Musical staff starting at measure 5. It continues the rhythmic pattern with eighth notes.

8



Musical staff starting at measure 8. It continues the rhythmic pattern with eighth notes.

11



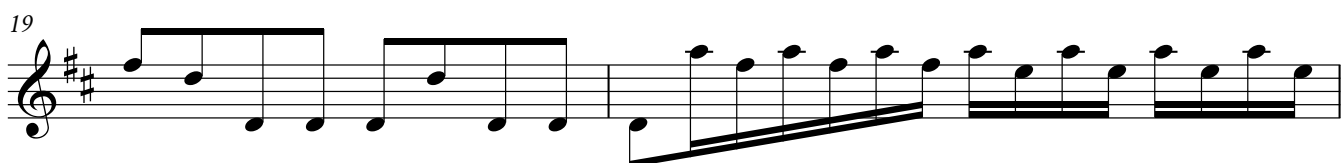
Musical staff starting at measure 11. It continues the rhythmic pattern with eighth notes.

15



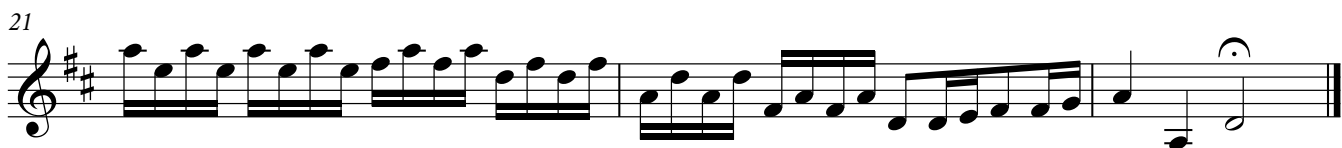
Musical staff starting at measure 15. It continues the rhythmic pattern with eighth notes.

19



Musical staff starting at measure 19. It continues the rhythmic pattern with eighth notes.

21



Musical staff starting at measure 21. It continues the rhythmic pattern with eighth notes and ends with a fermata over a whole note.

42

46

49

55

59

63

67

71

75