

Rheinberger

Organ Concerto  
No.1, Op.137

Violino II

# Organ Concerto No.1, Op.137

## I.

Rheinberger

Maestoso (♩=92)

*f*

7

3

3

3

*p*

15

3

3

cresc.

*f*

2

*f*

21

**A**

5

pizz.

*p*

31

4

arco

*p*

40

*p*

47

**B**

*f*

51

*ff*

57

trm

*mf*

64

*f*

69 **C**  
*ff* 3 *mf* *p*

75  
*f* *p*

81 2 *p* *cresc.*

88 2 *f* *mf* *cresc.*

95 **D** *ff*

101 *p* *f*

106 *ff* *p*

111 3 *pizz.*

119 *arco* *f*

122 **E** *p*

Violino II

128 *f*

132 *p* 4

141 *f* F 4

147 *p*

156 *ff*

162 *tr* *mf* *f*

169 *mf*

175 G *p* *f*

181 2 *f*

189 *ff*

194 2 *mf* *cresc.*

Detailed description: This page of a musical score for Violino II contains ten staves of music, numbered 128 to 194. The music is written in a single treble clef with a key signature of one flat (B-flat). The score includes various musical notations such as slurs, ties, and dynamic markings. Measure 128 starts with a forte (*f*) dynamic. Measure 132 features a piano (*p*) dynamic and a 4-measure rest. Measure 141 has a forte (*f*) dynamic and a boxed 'F' above the staff, followed by a 4-measure rest. Measure 147 has a piano (*p*) dynamic. Measure 156 has a fortissimo (*ff*) dynamic. Measure 162 includes a trill (*tr*) and dynamics of mezzo-forte (*mf*) and forte (*f*). Measure 169 has a mezzo-forte (*mf*) dynamic. Measure 175 has a piano (*p*) dynamic, a boxed 'G' above the staff, and a forte (*f*) dynamic. Measure 181 has a forte (*f*) dynamic and a 2-measure rest. Measure 189 has a fortissimo (*ff*) dynamic. Measure 194 has a mezzo-forte (*mf*) dynamic and a 2-measure rest, ending with a crescendo (*cresc.*) marking.

199 *tr*  
*ff*

203

II.

Andante (♩=108)

5 *con sord.*  
*p* *mf* *cresc.*

10 *f* *p*

19 *p* *f* *senza sord.*

26 **H** *mf* *f*

36 *mf* *f*

43 *mf* *f tenuto* *p* **I**

49 *f*

54 *mf* **5**

Violino II

64

*p sf sf*

70

*sf f*

75

**K**

*mf ff*

81

*p f*

87

*p pp*

96

**L**

*pp p sf*

102

*f sf*

109

*p pp*

117

*pp pizz.*

III.

Con moto (♩=92)  
arco

1 *f marcato*

6 *sf*

12 *sf*

18

24 **M** *p dolce*

33 *mf* **5** *f*

46 *sf* **N** *sf sf* **2**

54 *mf* *f*

62 *trmn*

69 *mf* **7**

Violino II

81 *f*

87 **16** *p*

107 **O**

113

120 **3** pizz. *pp*

128 arco *f*

134

141

148 *sff* *sff*

155 rit. **P** *ff*

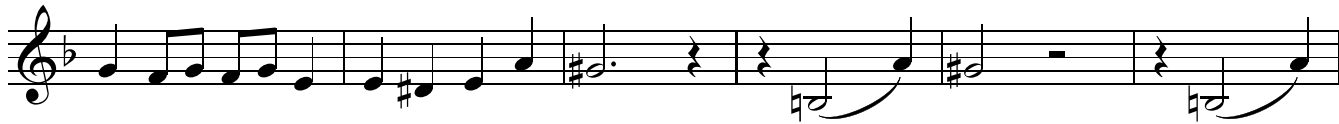
161 *ff*



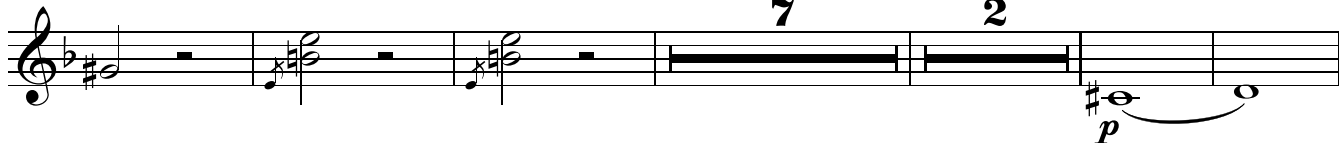
166



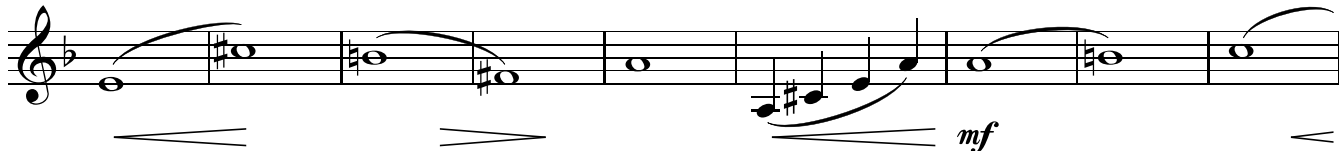
171



177



191



200



211



215



219



223



227



Violino II

**animato**  
260 pizz. arco  
*p* *cresc.* *f*

266 **4**

275 **4** *ff*

281 **poco rit.**