

George Frideric Handel Water Music

Viola

Suite I in F-Dur

I. Ouverture

5

9

1. 2.

13 5 Viol. II conc.

22

26 2

34 *f*

39 1

45 1

51

55

59

p *f*

64

68

71

74

2. Adagio e staccato

p

7

13

f 2 Viol. I

Handel — Water Music

Viola

4

21

p *f* *p*

3.

tr 3

73

22

tr 3

33

41

1

51

p

59

f

68

75

84

tr 3

92

99

Fine

4. Andante

Ob. I

Musical score for Viola, measures 1-26. The score is in 3/4 time and G major. It begins with a treble clef and a common time signature. The first measure is marked with a fermata and a dynamic marking of *ff*. The melody consists of eighth and sixteenth notes, with some rests. Measure numbers 6, 11, 16, and 21 are indicated at the start of their respective lines. The piece concludes with a first ending bracket over the final two measures.

5.

3 fois

Nr. 3 da capo

Musical score for Viola, measures 27-76. The score is in 3/4 time and G major. It begins with a treble clef and a common time signature. The first measure is marked with a fermata and a dynamic marking of *ff*. The melody consists of eighth and sixteenth notes, with some rests. Measure numbers 12, 23, 35, 47, and 59 are indicated at the start of their respective lines. The piece concludes with a first ending bracket over the final two measures, followed by the word "Fine".

da capo

Viola

6. Air

3 fois



7. Minuet

Cor. I

3 fois

Cor. I



48



57



65



8. Bourrée

3 times



6



11



17



seconda volta: tacet

9. Hornpipe

3 times



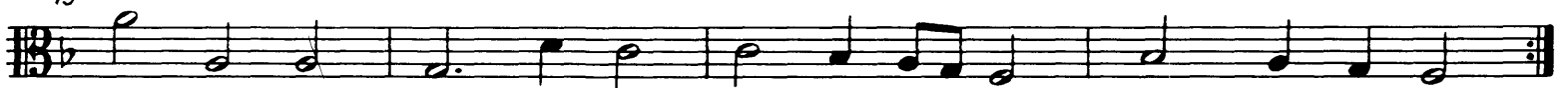
5



9



13



seconda volta: tacet

Viola

10. Ob. I

Ob. I

10. Ob. I

Ob. I

6

3

Adagio

Suite II in D-Dur

11.

11.

3

1

3

1

29

37

43

12. Alla Hornpipe

8

17

24

33

40

46

53

67

68

Cor. I

3

4

1

3

1

Fine

da capo

13. Minuet

9

17

Viola

14. Lentement

Musical staff 1 for piece 14, measures 1-9. The staff is in G major (one sharp) and 3/4 time. It begins with a treble clef and a bass clef. The melody consists of eighth and quarter notes.

Musical staff 2 for piece 14, measures 10-18. Measure 10 starts with a fermata over a half note G. The staff continues with quarter and eighth notes.

Fine

Musical staff 3 for piece 14, measures 19-26. Measure 19 starts with a fermata over a half note G. A fingering '2' is indicated above the first note. The staff continues with quarter and eighth notes.

Musical staff 4 for piece 14, measures 27-34. Measure 27 starts with a fermata over a half note G. The staff continues with quarter and eighth notes.

da capo

15. Bourrée

This Air to be played 3 times over

Musical staff 1 for piece 15, measures 1-5. The staff is in G major (one sharp) and 3/4 time. It begins with a treble clef and a bass clef. The melody consists of eighth and quarter notes.

Musical staff 2 for piece 15, measures 6-10. Measure 6 starts with a fermata over a half note G. The staff continues with eighth and quarter notes.

Suite III in G-Dur

16.

Musical staff 1 for piece 16, measures 1-7. The staff is in G major (one sharp) and 3/4 time. It begins with a treble clef and a bass clef. The melody consists of quarter and eighth notes.

Musical staff 2 for piece 16, measures 8-14. Measure 8 starts with a fermata over a half note G. The staff continues with quarter and eighth notes.

Musical staff 3 for piece 16, measures 15-23. Measure 15 starts with a fermata over a half note G. The staff continues with quarter and eighth notes.

Musical staff 4 for piece 16, measures 24-30. Measure 24 starts with a fermata over a half note G. The staff continues with quarter and eighth notes.

37

Musical staff for measures 37-47 of the first piece. The key signature is one sharp (F#) and the time signature is 3/4. The melody consists of eighth and quarter notes.

38

Musical staff for measures 48-52 of the first piece. The key signature is one sharp (F#) and the time signature is 3/4. The melody consists of quarter and eighth notes, ending with a repeat sign.

17. Rigaudon

Musical staff for measures 1-6 of the Rigaudon. The key signature is one sharp (F#) and the time signature is common time (C). The melody consists of quarter and eighth notes.

7

Musical staff for measures 7-12 of the Rigaudon. The key signature is one sharp (F#) and the time signature is common time (C). The melody consists of quarter and eighth notes.

13

Musical staff for measures 13-18 of the Rigaudon. The key signature is one sharp (F#) and the time signature is common time (C). The melody consists of quarter and eighth notes, with a repeat sign at measure 13.

19

Musical staff for measures 19-24 of the Rigaudon. The key signature is one sharp (F#) and the time signature is common time (C). The melody consists of quarter and eighth notes.

25

Musical staff for measures 25-36 of the Rigaudon. The key signature is one sharp (F#) and the time signature is common time (C). The melody consists of quarter and eighth notes.

37

Musical staff for measures 37-47 of the Rigaudon. The key signature is one sharp (F#) and the time signature is common time (C). The melody consists of quarter and eighth notes, ending with a repeat sign.

Fine

18.

Musical staff for measures 1-6 of the second piece. The key signature is one flat (Bb) and the time signature is common time (C). The melody consists of quarter and eighth notes.

7

Musical staff for measures 7-12 of the second piece. The key signature is one flat (Bb) and the time signature is common time (C). The melody consists of quarter and eighth notes.

13

Musical staff for measures 13-18 of the second piece. The key signature is one flat (Bb) and the time signature is common time (C). The melody consists of quarter and eighth notes, with a repeat sign at measure 13.

19

Musical staff for measures 19-24 of the second piece. The key signature is one flat (Bb) and the time signature is common time (C). The melody consists of quarter and eighth notes.

Nr.17: da capo

Viola

19. Menuet

Musical notation for Menuet 19, measures 1-14. The piece is in G minor (one flat) and 3/4 time. The notation consists of three staves. The first staff contains measures 1-6. The second staff contains measures 7-13, with a repeat sign at the beginning of measure 7. The third staff contains measure 14, which ends with a double bar line and repeat dots.

20.

Musical notation for Menuet 20, measures 1-25. The piece is in G minor (one flat) and 3/4 time. The notation consists of three staves. The first staff contains measures 1-8. The second staff contains measures 9-16, with a repeat sign at the beginning of measure 9. The third staff contains measures 17-25, with the word "Fine" written at the end of measure 17. The piece concludes with a double bar line and repeat dots.

21.

Musical notation for Menuet 21, measures 1-5. The piece is in G minor (one flat) and common time (C). The notation consists of two staves. The first staff contains measures 1-4. The second staff contains measure 5, which ends with a double bar line and repeat dots.

22.

Musical notation for Menuet 22, measures 1-6. The piece is in G major (one sharp) and common time (C). The notation consists of three staves. The first staff contains measures 1-2, with triplets indicated by a '3' below the notes. The second staff contains measures 3-4, also with triplets. The third staff contains measures 5-6, with triplets and a slur over measures 5 and 6. The piece concludes with a double bar line and repeat dots.